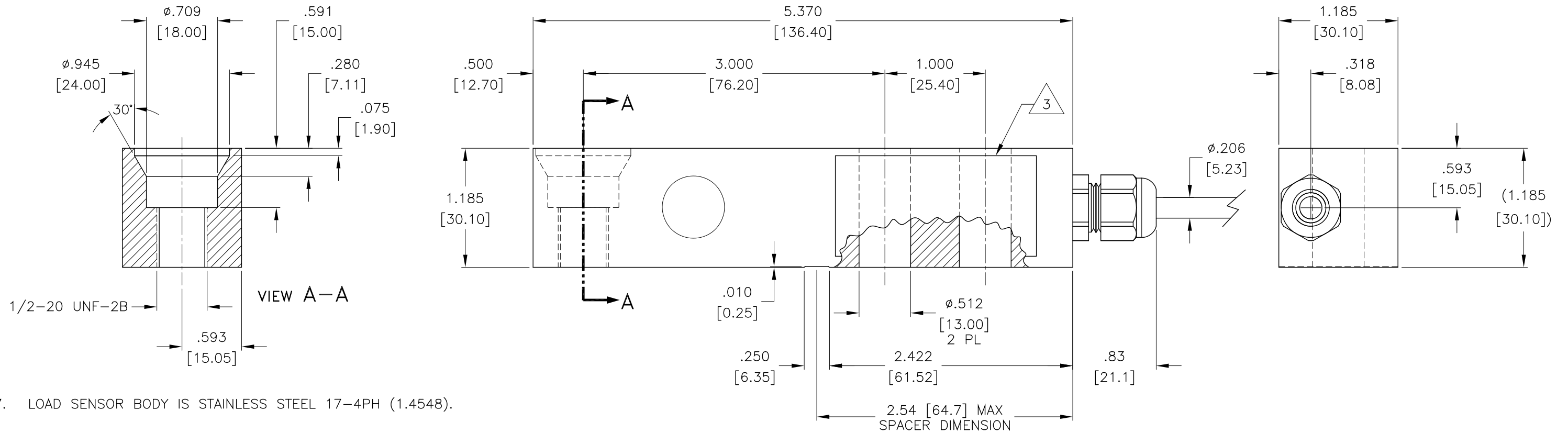


MODEL NUMBER	CAPACITY LBS [KG OR MT]	CABLE LENGTH FT [M]	MOUNTING BOLT AND GRADE	THREAD TORQUE FT-LBS [Nm]
HISLB-200LB	200 LB [91KG]	10FT [3M]	.500-20 UNC GRADE 5 [M12 GRADE 8.8]	66 [90]
HISLB-500LB	500 LB [227KG]			
HISLB-1KLB	1 KLB [454KG]			
HISLB-2.5KLB	2.5 KLB [1.13MT]			
HISLB-5KLB	5 KLB [2.27MT]	10FT [3M]	.500-20 UNC GRADE 8 [M12 GRADE 10.9]	88 [120]

REV.	ECO/DDC	DESCRIPTION	DATE	DRAFT	CHECK	APV'D
A	----	RELEASED.	01-16-23	V.J.C.	J.M.	V.J.C.
B	----	REMOVED $\phi$ .169 [4.30] LOAD FOOT BOLT PIN HOLE.	07-06-23	V.J.C.	J.M.	V.J.C.



7. LOAD SENSOR BODY IS STAINLESS STEEL 17-4PH (1.4548).
6. CABLE IS SHIELDED, 6 CONDUCTOR. CABLE SHIELD IS FLOATING FROM LOAD SENSOR BODY. SEE TABLE FOR CABLE LENGTHS.
5. LOAD SENSOR WIRE COLOR CODE:
 

EXCITATION +	RED
EXCITATION -	BLACK
SIGNAL +	GREEN
SIGNAL -	WHITE
C2 +	GRAY
C2 -	VIOLET
SHIELD	YELLOW

10. SEE SHEET 2 FOR FULL SCALE 2 DIMENSIONAL DROP-IN CAD FILE VIEWS.
9. LOAD SENSOR COMPENSATED TEMPERATURE RATING IS  $-10^{\circ}\text{C}$  TO  $+40^{\circ}\text{C}$ .
8. LOAD SENSOR SAFE OPERATING TEMPERATURE RATING IS  $-20^{\circ}\text{C}$  TO  $+65^{\circ}\text{C}$ . USAGE OF LOAD SENSOR AT TEMPERATURES BELOW  $-20^{\circ}\text{C}$  REQUIRES THAT THE LOAD SENSOR AND CABLE BE TEMPERATURE CONTROLLED.

NOTES: UNLESS OTHERWISE SPECIFIED (CONT'D)

4. CABLE WIRE ENDS ARE STRIPPED BACK AND TINNED.

LOCATION OF MODEL/SERIAL NUMBER LABEL.

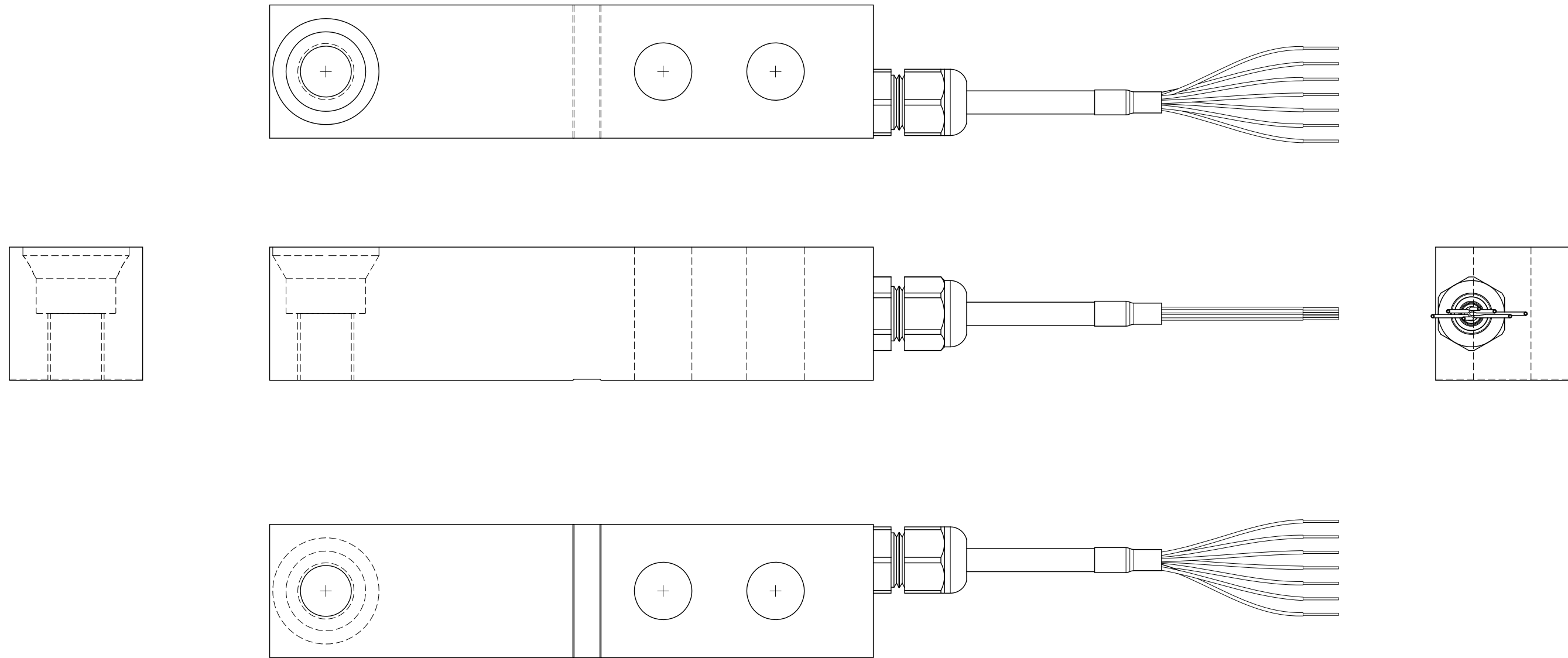
2. THIS DRAWING IS SUBJECT TO CHANGE WITHOUT NOTICE.

1. RATED OUTPUT:  $2\text{mV/V} \pm 0.1\%$ .

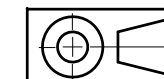
NOTES: UNLESS OTHERWISE SPECIFIED

PROPRIETARY NOTICE  
ALL DATA AND INFORMATION CONTAINED IN OR DISCLOSED BY THIS DOCUMENT IS CONFIDENTIAL AND PROPRIETARY INFORMATION OF HARDY PROCESS SOLUTIONS INC. AND ALL RIGHTS THEREIN ARE EXPRESSLY RESERVED. BY ACCEPTING THIS MATERIAL THE RECIPIENT AGREES THAT THIS MATERIAL AND THE INFORMATION CONTAINED THEREIN IS HELD IN CONFIDENCE AND IN TRUST AND SHALL NOT BE USED, COPIED, REPRODUCED IN WHOLE OR IN PART, NOR ITS CONTENTS REVEALED IN ANY MANNER TO OTHERS, EXCEPT TO MEET THE SPECIFIC PURPOSE FOR WHICH IT WAS DELIVERED.

ITEM		QTY	PART NUMBER	DESCRIPTION	COMMENTS
PARTS LIST					
UNLESS OTHERWISE SPECIFIED		CONTRACT NO.		<p style="margin: 0;">TITLE <b>OUTLINE DRAWING, LOAD SENSOR, HISLB SERIES</b></p>	
DIMENSIONS ARE IN INCHES [MM]		APPROVALS			
TOLERANCES ARE: DECIMALS: .XX = $\pm 0.03$ [.8] .XXX = $\pm 0.010$ [.25] ANGLES: $\pm 0^{\circ}$ , $30^{\circ}$		DRAWN V. CHULA	DATE 08-18-22		
MATERIAL		CHECKED J. MOEN	DATE 01-16-23		
FINISH		APPROVED V. CHULA	DATE 01-16-23	SIZE D	FSCM 21316
DO NOT SCALE DRAWING		ISSUED V. CHULA	DATE 01-16-23	DRAWING NO. 0588-0219	REV. B
		PRODUCTION	DATE	FILE NAME: 588219B1.DWG	SCALE: NONE
				SHEET 1 OF 2	



DROP-IN CAD FILE VIEWS



<b>HARDY</b> PROCESS SOLUTIONS			
TITLE OUTLINE DRAWING, LOAD SENSOR, HISLB SERIES			
SIZE	FSCM	DRAWING NO.	REV.
D	21316	0588-0219	B
FILE NAME: 588219B1.DWG		SCALE: NONE	SHEET 2 OF 2